

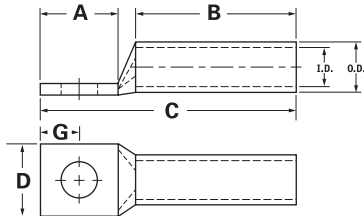
TYPE CLNS

Features

- Manufactured from high strength seamless copper tubing
- Electro-Tin plated
- Chamfered entry
- Color coded
- Suitable for use in circuits rated 35KV or less, proper high voltage spacing and insulation techniques must be used
- UL Listed and CSA Certified with ILSCO and major competitor's compression tools
- UL467 Listed 500 kcmil - 8 AWG, #8 - #2 SOL
- Rated to 90° C

Benefits

- Offers maximum conductivity and excellent crimping characteristics
- Provides low contact resistance
- For easy conductor insertion
- Identifies the proper compression die
- Application versatility
- Reduces inventory requirements
- For grounding and bonding applications



Catalog Number	Wire Size	Alt Wire Size	Expanded* Wire Range	Bolt Size	Stud Hole Dia.	Dimensions					Die Color Code	Die Index	O.D.	I.D.
						A	B	C	D	G				
CLNS-8-10	#8 AWG	#8 FLEX, #8 SOL	-	10	0.219	0.562	0.812	1.569	0.374	0.258	Red	I-21	0.272	0.179
CLNS-8-14	#8 AWG	#8 FLEX, #8 SOL	-	1/4	0.281	0.680	0.812	1.687	0.486	0.320	Red	I-21	0.272	0.179
CLNS-8-516	#8 AWG	#8 FLEX, #8 SOL	-	5/16	0.343	0.875	0.812	1.882	0.532	0.352	Red	I-21	0.272	0.179
CLNS-8-38	#8 AWG	#8 FLEX, #8 SOL	-	3/8	0.406	0.875	0.812	1.882	0.593	0.414	Red	I-21	0.272	0.179
CLNS-6-10	#6 AWG	#6 FLEX, #6 SOL	-	10	0.219	0.562	1.125	1.882	0.440	0.258	Blue	I-24	0.320	0.225
CLNS-6-14	#6 AWG	#6 FLEX, #6 SOL	-	1/4	0.281	0.680	1.125	2.000	0.440	0.320	Blue	I-24	0.320	0.225
CLNS-6-516	#6 AWG	#6 FLEX, #6 SOL	-	5/16	0.343	0.875	1.125	2.195	0.530	0.352	Blue	I-24	0.320	0.225
CLNS-6-38	#6 AWG	#6 FLEX, #6 SOL	-	3/8	0.406	0.875	1.125	2.195	0.598	0.414	Blue	I-24	0.320	0.225
CLNS-6-12	#6 AWG	#6 FLEX, #6 SOL	-	1/2	0.562	1.250	1.125	2.570	0.755	0.546	Blue	I-24	0.320	0.225
CLNS-4-10	#4 AWG	#4 SOL	4-6 AWG	10	0.219	0.562	1.125	1.921	0.486	0.258	Gray	I-29	0.343	0.250
CLNS-4-14	#4 AWG	#4 SOL	4-6 AWG	1/4	0.281	0.680	1.125	2.039	0.486	0.320	Gray	I-29	0.343	0.250
CLNS-4-516	#4 AWG	#4 SOL	4-6 AWG	5/16	0.343	0.875	1.125	2.234	0.486	0.352	Gray	I-29	0.343	0.250
CLNS-4-38	#4 AWG	#4 SOL	4-6 AWG	3/8	0.406	0.875	1.125	2.234	0.593	0.414	Gray	I-29	0.343	0.250
CLNS-4-12	#4 AWG	#4 SOL	4-6 AWG	1/2	0.562	1.250	1.125	2.609	0.750	0.546	Gray	I-29	0.343	0.250
CLNS-3-10	#3 AWG	#4 FLEX	3-6 AWG	10	0.219	0.562	1.125	1.942	0.532	0.258	White	I-29	0.375	0.275
CLNS-3-14	#3 AWG	#4 FLEX	3-6 AWG	1/4	0.281	0.680	1.125	2.060	0.532	0.320	White	I-29	0.375	0.275
CLNS-3-516	#3 AWG	#4 FLEX	3-6 AWG	5/16	0.343	0.875	1.125	2.255	0.532	0.352	White	I-29	0.375	0.275
CLNS-3-38	#3 AWG	#4 FLEX	3-6 AWG	3/8	0.406	0.875	1.125	2.255	0.593	0.414	White	I-29	0.375	0.275
CLNS-3-12	#3 AWG	#4 FLEX	3-6 AWG	1/2	0.562	1.250	1.125	2.630	0.750	0.546	White	I-29	0.375	0.275
CLNS-2-10	#2 AWG	#2 SOL	2-6 AWG	10	0.219	0.562	1.125	1.973	0.599	0.258	Brown	I-33	0.421	0.312
CLNS-2-14	#2 AWG	#2 SOL	2-6 AWG	1/4	0.281	0.680	1.125	2.091	0.599	0.320	Brown	I-33	0.421	0.312
CLNS-2-516	#2 AWG	#2 SOL	2-6 AWG	5/16	0.343	0.875	1.125	2.286	0.599	0.352	Brown	I-33	0.421	0.312
CLNS-2-38	#2 AWG	#2 SOL	2-6 AWG	3/8	0.406	0.875	1.125	2.286	0.599	0.414	Brown	I-33	0.421	0.312
CLNS-2-12	#2 AWG	#2 SOL	2-6 AWG	1/2	0.562	1.250	1.125	2.661	0.750	0.546	Brown	I-33	0.421	0.312
CLNS-1-10	#1 AWG	#2 FLEX	1-6 AWG	10	0.219	0.562	1.375	2.267	0.673	0.258	Green	I-37	0.468	0.359
CLNS-1-14	#1 AWG	#2 FLEX	1-6 AWG	1/4	0.281	0.875	1.375	2.580	0.673	0.320	Green	I-37	0.468	0.359
CLNS-1-516	#1 AWG	#2 FLEX	1-6 AWG	5/16	0.343	0.875	1.375	2.580	0.673	0.352	Green	I-37	0.468	0.359
CLNS-1-38	#1 AWG	#2 FLEX	1-6 AWG	3/8	0.406	0.875	1.375	2.580	0.673	0.414	Green	I-37	0.468	0.359
CLNS-1-12	#1 AWG	#2 FLEX	1-6 AWG	1/2	0.562	1.250	1.375	2.955	0.750	0.546	Green	I-37	0.468	0.359
CLNS-1/0-10	1/0 AWG	#1 FLEX	1/0-6 AWG	10	0.219	0.562	1.500	2.418	0.738	0.258	Pink	I-42	0.515	0.390
CLNS-1/0-14	1/0 AWG	#1 FLEX	1/0-6 AWG	1/4	0.281	0.875	1.500	2.731	0.738	0.320	Pink	I-42	0.515	0.390
CLNS-1/0-516	1/0 AWG	#1 FLEX	1/0-6 AWG	5/16	0.343	0.875	1.500	2.731	0.738	0.352	Pink	I-42	0.515	0.390
CLNS-1/0-38	1/0 AWG	#1 FLEX	1/0-6 AWG	3/8	0.406	0.875	1.500	2.731	0.738	0.414	Pink	I-42	0.515	0.390
CLNS-1/0-12	1/0 AWG	#1 FLEX	1/0-6 AWG	1/2	0.562	1.250	1.500	3.106	0.738	0.546	Pink	I-42	0.515	0.390

All wire sizes, unless noted otherwise, are American Wire Gauge (AWG)

* When installed with specified dieless tools + See pages 87 to 93 for complete tooling information.

For Bent Tangs change the 4th letter to a B and add "-4" for 45 deg. or "-9" for 90 deg.

UL File E6207