

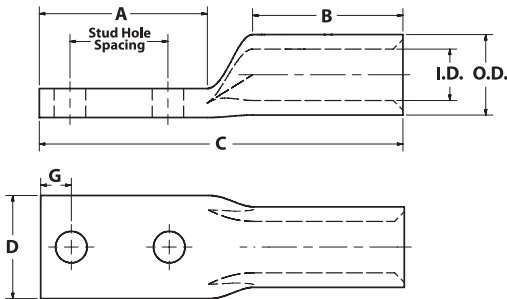
## TYPE ALND

### Features

- Manufactured from high strength aluminum alloy
- Electro-Tin plated
- Chamfered entry
- Color coded end cap
- Roll marked
- Two bolt hole pattern
- Pre-filled with DE-OX® oxide inhibiting compound
- Range taking
- Suitable for use in circuits rated 35KV or less, proper high voltage spacing and insulation techniques must be used
- Dual rated AL9CU

### Benefits

- Offers maximum conductivity and excellent crimping characteristics
- Provides low contact resistance
- For easy conductor insertion
- Identifies the proper compression die
- For easy identification and proper location of crimps
- Provides maximum surface contact, secure attachment, and stabilization
- Prevents oxides from forming
- Permits inventories to be kept to a minimum
- Application versatility
- Rated to 90° C for use with aluminum or copper conductor



Catalog Number	Wire Size	Expanded Wire Range*	Bolt Size	Stud Hole Dia.	Stud Hole Spacing	Dimensions					Die Color Code	Die Index	O.D.	I.D.
						A	B	C	D	G				
ALND-8-10-1	#8	-	#10	0.219	1.000	1.750	0.602	2.560	0.388	0.259	Blue	374	0.300	0.155
ALND-6-14-1	#6	-	1/4	0.281	1.000	1.687	0.602	2.650	0.449	0.321	Gray	346	0.338	0.194
ALND-4-14-1	#4	4-6 AWG	1/4	0.281	1.000	1.636	0.920	2.930	0.568	0.321	Green	375	0.427	0.247
ALND-2-14-1	#2	2-6 AWG	1/4	0.281	1.000	1.635	0.970	3.035	0.700	0.321	Pink	348	0.525	0.307
ALND-2-38-1	#2	2-6 AWG	3/8	0.406	1.000	1.994	0.970	3.290	0.700	0.414	Pink	348	0.525	0.307
ALND-2-38-134	#2	2-6 AWG	3/8	0.406	1.750	2.676	0.970	3.985	0.700	0.414	Pink	348	0.525	0.307
ALND-1-14-1	#1	1-2 AWG	1/4	0.281	1.000	1.633	0.970	3.086	0.748	0.321	Gold	471	0.544	0.358
ALND-1-38-1	#1	1-2 AWG	3/8	0.406	1.000	1.992	0.970	3.345	0.748	0.414	Gold	471	0.544	0.358
ALND-1-38-134	#1	1-2 AWG	3/8	0.406	1.750	2.694	0.970	4.035	0.748	0.414	Gold	471	0.544	0.358
ALND-1/0-14-1	1/0	1/0-1 AWG	1/4	0.281	1.000	1.586	1.070	3.230	0.819	0.321	Tan	296	0.599	0.385
ALND-1/0-38-134	1/0	1/0-1 AWG	3/8	0.406	1.750	2.646	1.070	4.185	0.819	0.414	Tan	296	0.599	0.385
ALND-1/0-12-1	1/0	1/0-1 AWG	1/2	0.562	1.000	2.181	1.070	3.700	0.819	0.546	Tan	296	0.599	0.385
ALND-2/0-38-1	2/0	2/0-1 AWG	3/8	0.406	1.000	1.975	1.355	3.940	0.921	0.414	Olive	297	0.674	0.432
ALND-2/0-38-134	2/0	2/0-1 AWG	3/8	0.406	1.750	2.660	1.355	4.633	0.921	0.414	Olive	297	0.674	0.432
ALND-2/0-12-1	2/0	2/0-1 AWG	1/2	0.562	1.000	2.166	1.355	4.137	0.921	0.546	Olive	297	0.674	0.432
ALND-3/0-38-1	3/0	3/0-1 AWG	3/8	0.406	1.000	1.981	1.355	4.020	1.044	0.414	Ruby	467	0.761	0.495
ALND-3/0-38-134	3/0	3/0-1 AWG	3/8	0.406	1.750	2.671	1.355	4.695	1.044	0.414	Ruby	467	0.761	0.495
ALND-3/0-12-1	3/0	3/0-1 AWG	1/2	0.562	1.000	2.190	1.355	4.200	1.044	0.546	Ruby	467	0.761	0.495
ALND-4/0-38-1	4/0	4/0-1 AWG	3/8	0.406	1.000	2.005	1.535	4.120	1.170	0.414	White	298	0.854	0.553
ALND-4/0-38-134	4/0	4/0-1 AWG	3/8	0.406	1.750	2.668	1.535	4.800	1.170	0.414	White	298	0.854	0.553
ALND-4/0-12-1	4/0	4/0-1 AWG	1/2	0.562	1.000	2.177	1.535	4.300	1.170	0.546	White	298	0.854	0.553

For Tool and Die Information Refer to Tooling Information Page Series: ALNS, ALND

\* When installed with specified dieless tools

UL File E6207