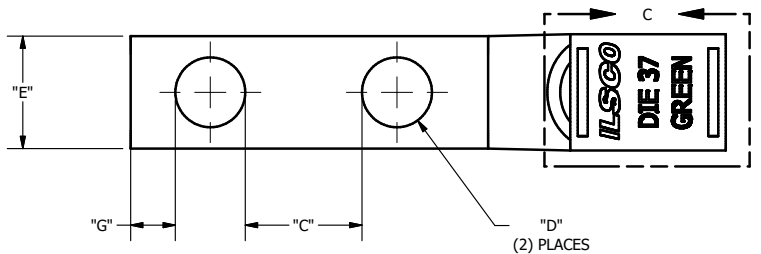


SCREW: NONE	MATERIAL: COPPER	REV: J	
END ITEM: SEE CHART	PLATING: EL-TIN	DRAWN BY:DW	SCALE: NTS
INFORMATION SHEET:FORM 157	MARKING: SEE CHART	DATE:5/12/2008	SIZE: B

**ECM INDUSTRIES**  
UL ILSCO KING BERGEN  
 800-776-9775 www.ilSCO.com

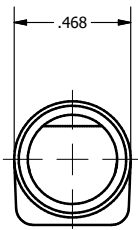
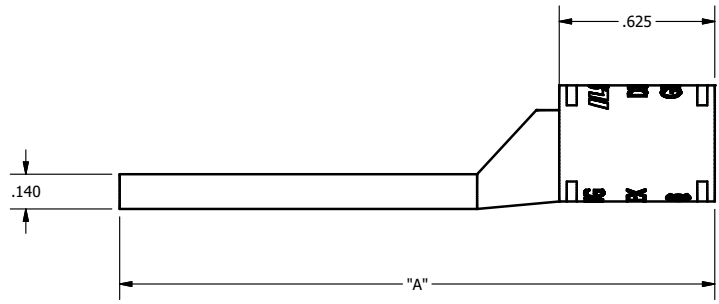
DWG NO: **YN0611-D**  
 SHEET: 1 OF 1



DETAIL C  
 TOP VIEW  
 COLOR: GREEN



DETAIL D  
 BOTTOM VIEW  
 COLOR: GREEN



END ITEM	"A"	"C"	"D"	"E"	"G"	TANG MARKING
CSWN-1-14-58	2.392	0.344	0.281	0.453	0.180	ILSCO, C-1-14-58, 1/4 X 5/8, 1 AWG, 2 FLEX, DIE 37, UL, CSA
CSWN-1-14-34	2.392	0.469	0.281	0.453	0.180	UL, ILSCO, CSA, C-1-14-34, 1 AWG, 2 FLEX, DIE 37

THIS PRINT AND INFORMATION THEREIN IS CONFIDENTIAL AND PROPRIETARY AND IS THE PROPERTY OF ECM INDUSTRIES. IT IS NOT TO BE COPIED OR REPRODUCED WITHOUT WRITTEN PERMISSION FROM ECM INDUSTRIES.